



11 Landale Drive Strathdale VIC

4 2 2

The home adjoins parkland with playground, meaning that no building can take place beside or behind. Offering four large bedrooms, master with walk in robe and modern en suite and three additional bedrooms all with built in robes. Formal lounge leading into a large kitchen, dining living room with a study at the rear of the home.

Price : \$ 850,000

Land Size : 762 sqm

View : <https://www.bendigoballaratrealstate.com.au/sale/vic/greater-bendigo-region/strathdale/residential/house/8042062>

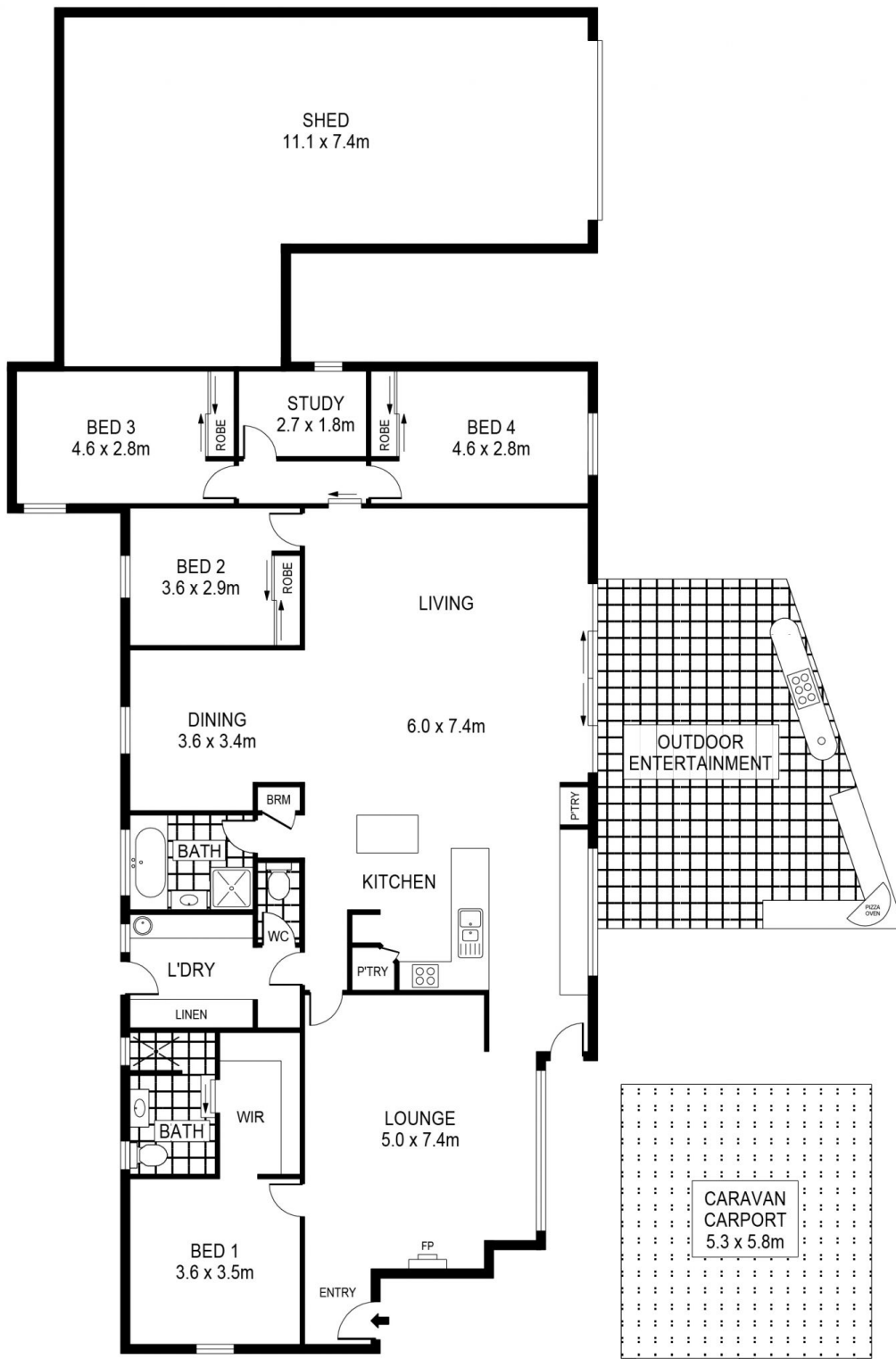
Study has been plumbed should an additional bathroom be required, potentially giving three bathrooms.

10.3 Kw of solar panels, along with a 13 Kw battery backup. This means no electricity bills or power blackouts.

Ceiling fans are fitted to all rooms, along with three reverse cycle air conditioners, spread throughout the house, for cooling and heating. In the lounge there is also a gas log



Sue Dearaugo
03 54449888
0418 518 774



SCALE (METRES)

SCALE IN METRES. INDICATIVE ONLY. DIMENSIONS ARE APPROXIMATE. ALL INFORMATION CONTAINED HEREIN IS GATHERED FROM SOURCES WE BELIEVE TO BE RELIABLE. HOWEVER WE CANNOT GUARANTEE ITS ACCURACY AND INTERESTED PARTIES SHOULD RELY ON THEIR OWN ENQUIRIES.
Ref. No: 240614

INT	:	213m ²
SHED	:	65m ²
CARAVAN CARPORT	:	31m ²
OUTDOOR ENTERTAINMENT	:	38m ²



11 LANDALE DRIVE