



262 Turners Road Strathfieldsaye VIC

4 2 3

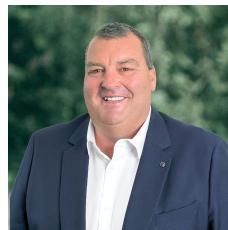
Nestled down a secluded driveway, this solid brick home at 262 Turners Road, Strathfieldsaye, offers a serene retreat amidst beautiful native bushland. Conveniently located, it's just a short drive from the amenities of Strathfieldsaye, including schools, childcare centres, an IGA and the dough si dough sourdough bakery, with central Bendigo only 15 minutes away this large acreage property is a hidden gem.

Upon entering, you'll find a generous formal lounge with large windows that frame the natural bush surroundings. This cozy space is warmed by a large wood heater, providing comfort during the colder months. The home is also equipped with split systems in the lounge and kitchen, ensuring year-round comfort. The lounge leads to a spacious dining room and a central kitchen, which boasts ample storage, plenty of bench space, and stainless-steel

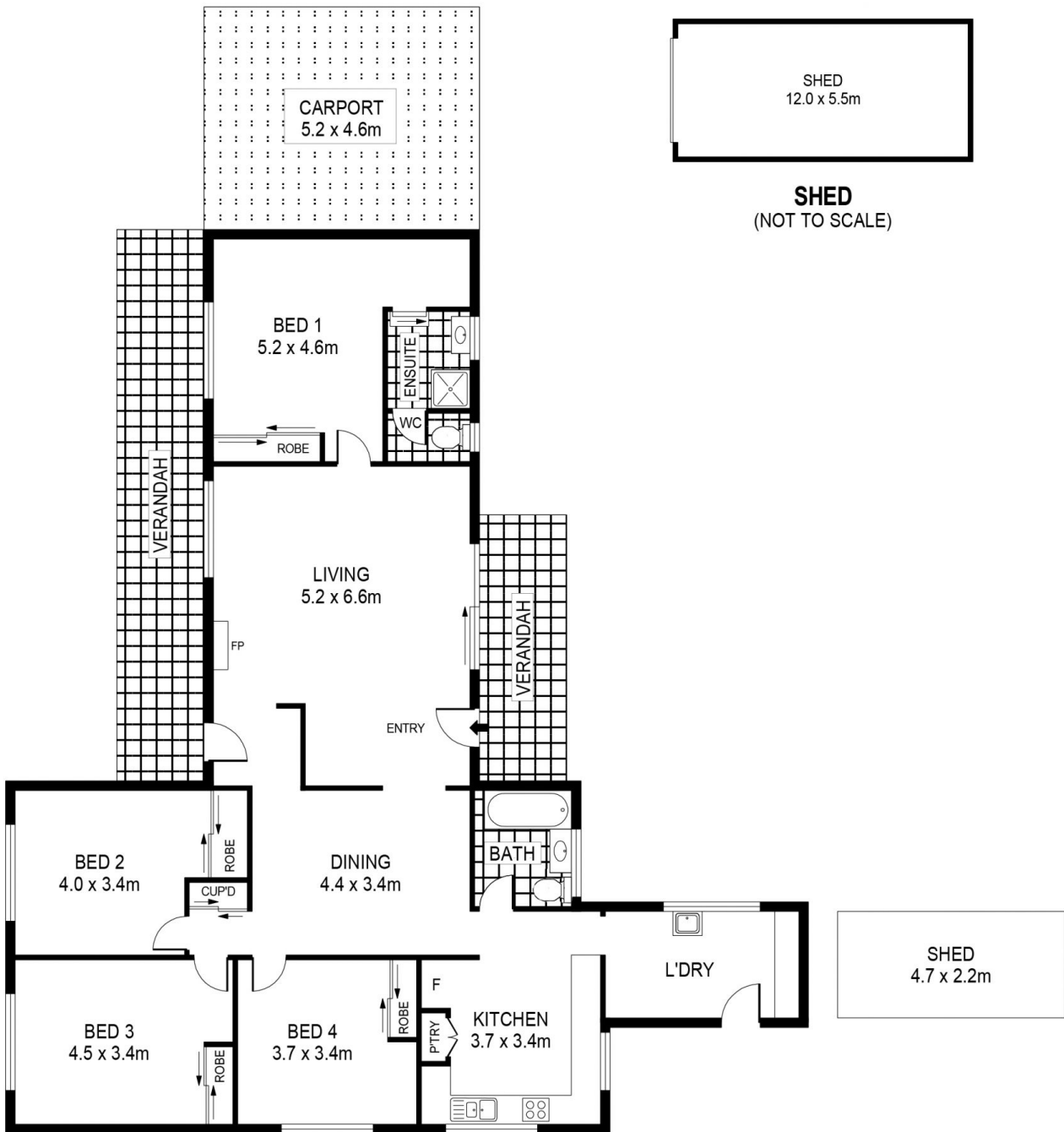
Price : New Price \$790,000 - \$860,000

Land Size : 6 Acres

View : <https://www.bendigoballaratrealstate.com.au/sale/vic/greater-bendigo-region/strathfieldsaye/residential/house/8092452>



Cameron Register
03 5444 9888
0411 956 937



SCALE IN METRES. INDICATIVE ONLY. DIMENSIONS ARE APPROXIMATE. ALL INFORMATION CONTAINED HEREIN IS GATHERED FROM SOURCES WE BELIEVE TO BE RELIABLE. HOWEVER WE CANNOT GUARANTEE ITS ACCURACY AND INTERESTED PARTIES SHOULD RELY ON THEIR OWN ENQUIRIES.
Ref. No. 240729

INT	:	167m ²
SHED	:	76m ²
CARPORT	:	24m ²
VERANDAH	:	30m ²

262 TURNERS ROAD