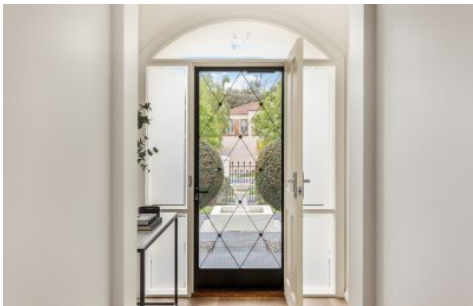


Bendigo



### 14 Adelle Court Strathdale VIC

5 2 2

If you value position, privacy and presentation, this flawless and functional family home located in a quiet cul-de-sac offers impressive style and surprising spaces - both inside and out. Situated on an oversized lot of approximately 1020m<sup>2</sup>, this builder's own residence comprises five bedrooms (or four with a study), two bathrooms, and three separate living areas.

Upon entering the front door, you'll find the formal lounge, featuring a gas log fire set in a white fireplace and plantation shutters that filter the morning sunshine. Across the hallway, the spacious main bedroom includes twin walk-in robes and a stunning new ensuite. All four remaining bedrooms have built-in-robes.

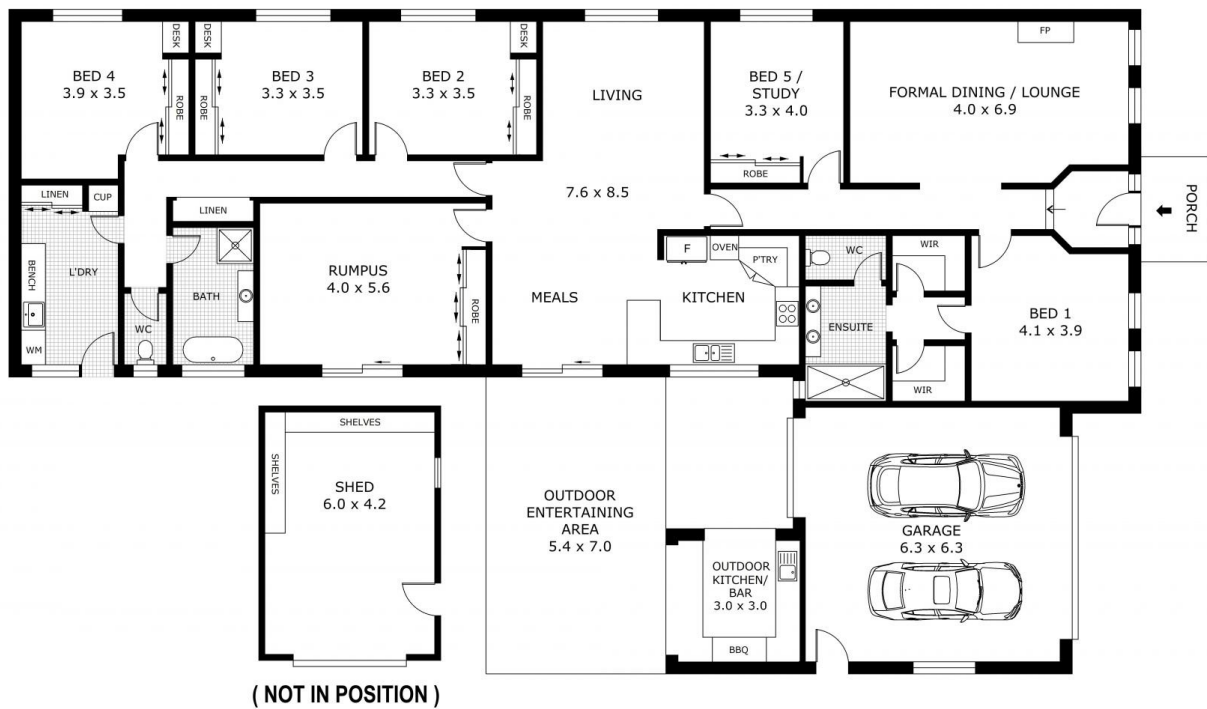
The heart of the home is the open-style kitchen, dining, and

**Land Size** : 1020 sqm

**View** : <https://www.bendigoballaratrealstate.com.au/sale/vic/greater-bendigo-region/strathdale/residential/house/8137760>



**Jen Wallace**  
03 54449888  
0407 867 839



Scale in metres. Indicative only. Dimensions are approximate. All information contained herein is gathered from sources we believe to be reliable. However we cannot guarantee its accuracy and interested parties should rely on their own enquiries.

Residence	- 240.1 m <sup>2</sup>
Porch	- 4.4 m <sup>2</sup>
Garage	- 39.6 m <sup>2</sup>
Outdoor Kitchen	- 9.0 m <sup>2</sup>
Outdoor Ent.	- 37.8 m <sup>2</sup>
Shed	- 25.2 m <sup>2</sup>
Total	- 356.1 m <sup>2</sup>



# 14 Adelle Court, Strathdale